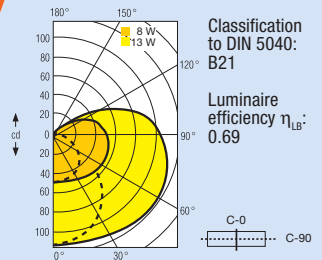
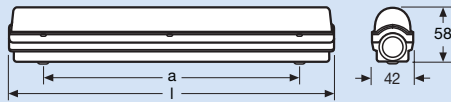
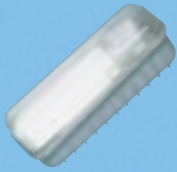
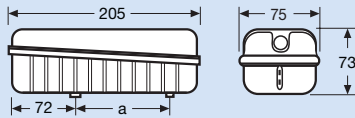


# LUMILUX BRIK® EL OSRAM DULUX BRIK®



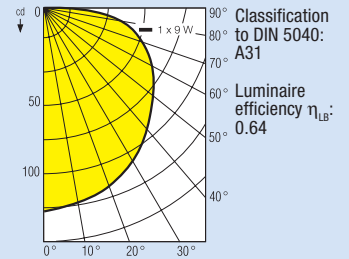
## LUMILUX BRIK® EL

Type	Product no. GREY	Prod. ref.	SP	l [mm]	a [mm]
8 W	4050300440880	72181	4	330	260
13 W	4050300440903	72185	4	560	400



## OSRAM DULUX BRIK®

Type	Product no. GREY	Product no. BLACK	Prod. ref.	SP	a [mm]
9 W	4050300315966	4050300315980	73036	4	102



## Description and features

The LUMILUX BRIK® EL batten luminaire and the OSRAM DULUX BRIK® compact luminaire are energy-saving damp-proof luminaires with a protective transparent cover for fixed connection indoors and out.

### LUMILUX BRIK® EL

- Slim splash-proof wall and ceiling batten luminaire for damp locations
- With electronic control gear
- With prismatic lamp cover for soft glare-free light
- For fixed connection
- Can be through-wired to create strip lighting

### OSRAM DULUX BRIK®

- Particularly compact splash-proof complete luminaire for indoors and out
- For fixed connection
- Lamp cover with special diffuser for pleasant glare-free light

## Technical data and equipment

### LUMILUX BRIK® EL

- Equipped with LUMILUX® L 8 W or 13 W/21-840 lamp
- Mains voltage: 230 V/50-60 Hz
- Dust-proof and splash-proof IP54
- □ ▽ △ D F S
- Colour: grey

### OSRAM DULUX BRIK®

- Equipped with OSRAM DULUX® S 9 W/21-840 lamp
- Mains voltage: 230 V/50 Hz
- Splash-proof IP44
- ▽ N
- Colour: grey, black

